

Units are available for use with both single and double purchase sets. When used with double purchase sets the arbor and head block must be replaced to accommodate the drive chain.

PowerAssist hoists may be located on the stage floor or in an arbor pit.

## Features

**Quality Management** – Clancy’s ISO 9001:2000 certified quality management system ensures consistency and excellence in engineering, manufacturing, project management, sales, and customer service.

**Technical Support** is available 24/7/365 from the factory. Additional support is provided by a worldwide group of established J.R. Clancy dealers.

## Safety

**No Handling of Counterweights** or climbing to elevated loading galleries to keep sets in balance. The PowerAssist winch handles the out-of-balance load for you.

**Two Levels of Limit Switches** are set for your specific site conditions. The normal travel and over travel switches use separate, redundant circuits for added security.

**E-Stop System** meets NFPA 79 “Electrical Standard for Industrial Machinery”.

**Deadman Controls** (“hold to run”) in conformance with NFPA 79 “Electrical Standard for Industrial Machinery,” ensure the operator is present when movement is taking place.

**Maintenance Light** – Regular service is necessary for safety and equipment life for all moving machinery. J.R. Clancy control systems have a maintenance light, indicating when regular system service is required.

**208, 230, or 460 volts** units are available without the need for expensive, bulky transformers. 380V 50Hz units are also available.

**Motors Rated to Lift the Load** have a 1.0 service factor, so they can lift the load every time – not just some of the time.

**Touch Safe** means the interior of all electrical enclosures are guarded to prevent touching live components, per IEC standard.

## General

A compact fixed speed hoist that automates a new or existing counterweight rigging set. The hoist and counterweight work together, allowing the set to carry any load from none to the rated capacity without the need to adjust counterweights.

## Applications

Most theatres in North America use manually operated counterweighted rigging sets. These use an arbor to hold weights that balance the load (lighting equipment, curtains, scenery, etc.) on the batten. In order to operate safely, the load and the counterweight must be equal.

In order to keep the set in balance, the counterweight must be adjusted every time the load changes. This may be frequent, and generally requires adjusting the counterweight from an elevated loading gallery. Failure to keep the sets in balance may result in “runaways” or accidents.

The PowerAssist winch, working with the counterweight arbor, carries the out-of-balance load. This is particularly helpful on high capacity sets with changing loads, such as lighting sets, removable orchestra shell ceilings, and scenery battens. Use of the PowerAssist eliminates the need for staff and students to balance sets, climb to the loading gallery, and reduces risk backstage.

## Models

MODEL	TYPE	SPEED	CAPACITY	CONTROL	HP	WEIGHT
018-PA	Single Purchase	25 fpm	2,000 lbs.	Push Button Station	1.5	225 lbs.
018-PA-SC				SceneControl <sup>®</sup> 50		
018-PADP	Double Purchase	20 fpm		Push Button Station		
018-PADPSC				SceneControl <sup>®</sup> 50		

**Control Options**

**Push Button Controls (Standard)**

Hold to run Up and Down pushbuttons are provided so that sets can be run by "eye". A key operated On / Off switch and an Emergency Stop button are provided for security.

**SceneControl 50 (Optional)**

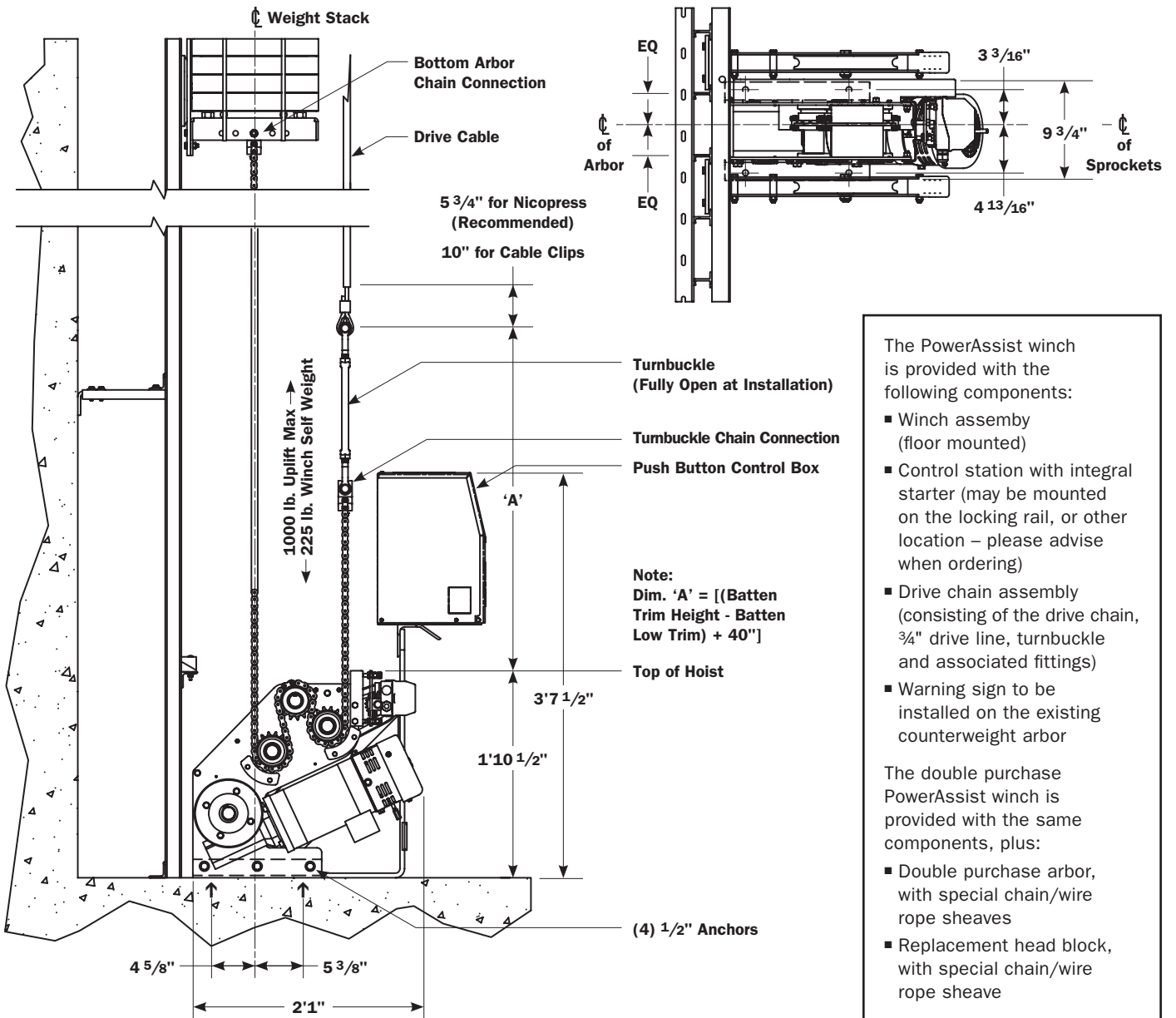
You can set four preset stop points for convenient, repeatable heights. For example, after replacing lamps on a lighting

set, you'll simply and accurately return the set to its proper position. If a set needs to be at different heights for different parts of a performance, you have the ability to set up to four preset positions – and change them as needed.

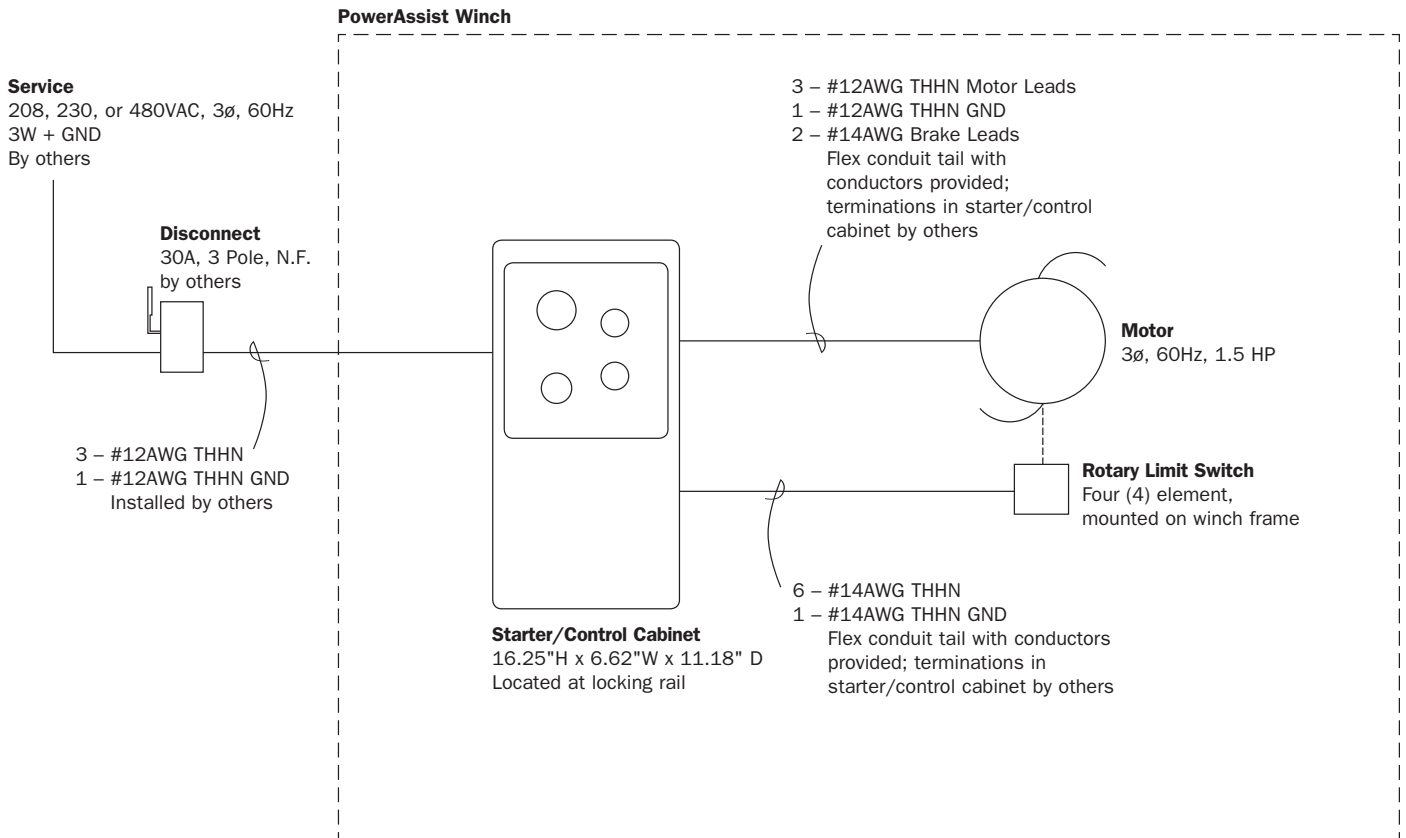
**Control of Multiple PowerAssists**

SceneControl 100 and 500 consoles allow control of multiple winches, including the ability to create cues that control several sets simultaneously. Contact us for more information.

**Dimensions**



**PowerAssist with Push Button Control One Line Riser — Typical**



**PowerAssist Electrical Requirements**

MODEL	SPEED, CAPACITY	HP	CURRENT DRAW	
			208 - 240 V	440 - 480 V
018-PA	25 fpm, 2000 lbs.	1.5	5.8 A	2.7 A
018-PA-SC				
018-PADP	20 fpm, 2000 lbs.			
018-PADPSC				